



Saint John the Evangelist Parish

Serving Wellesley - Newton

9 Glen Road
Wellesley Hills, MA 02481

www.stjohnwellesley.org

781-235-0045

(email) st-johns@comcast.net

(fax) 781-235-6990

Image painted by Anne Bell Robb/Kedron Design

Tenth Sunday in Ordinary Time • June 9, 2013



St. Francis House Clothing Drive

Help us, help others.

*Next weekend
June 15-16*

SUMMER MASS SCHEDULE

Saturday:

7:00 a.m.; 5:00 p.m. (Vigil)

Sunday:

7:30 a.m., 9:00 a.m. and 11:00 a.m.

Weekday:

7:00 a.m. (Monday-Saturday)

Holy Day: (As announced)

CONFESSIONS

Saturday: 3:30-4 p.m., Chapel
(or by appointment)

The Mission Statement of St. John Parish

*Baptized into Christ,
we are a community of believers,
bonded by our desire to learn and to live
the Gospel message.*

*As a Eucharistic people,
we share a commitment to foster
our personal and communal growth in faith
and to witness to Christ's presence
by our service to those in need,
both within and beyond our parish community.*

RELIGIOUS EDUCATION PROGRAM

Registration

Religious Education registration packets for the 2013/2014 school year were mailed to all families. If you have not received a packet in the mail, it is available for download on the Parish website found at www.stjohnwellesley.org.

The Parish's Confirmation preparation is a two year program beginning in grade 9. Except for those enrolled in Catholic schools, all students must complete the two year program prior to being Confirmed. All 10th grade Catholic school students planning to be Confirmed in May 2014 must fully participate in the second year of the Parish Religious Education Program. If you have any questions, please contact Jane Leonard at jleonard9@comcast.net or at 781.237.0141.

We are always looking for **teachers** who are willing to teach any of the grades 1 – 10. If you are interested, please contact the religious education office at 781.235.5337 (grades 1– 6) or 781.237.0141 (grades 7 – 10).



FIRST COMMUNION

PICTURES: The pictures from the 2013 First Communion ceremonies are now available for pickup in the vestibule of the rectory.

ADULT FAITH FORMATION

My Faith Map

As we know, during this Year of Faith, there is a great emphasis on Evangelization, the act of spreading the Good News, sharing the message and life of Jesus Christ.

At a recent meeting of our Parish Adult Faith Formation Commission, the group explored the idea of inviting parishioners to witness and share their experience and journey in faith. These stories, personal and different, identified or anonymous, will appear in the Sunday Bulletin, under the heading, **My Faith Map**.

Please send your Faith Map story to Frank McConville, by e-mail: jfmccconville@comcast.net or snail mail: 59 Thackeray Road, Wellesley, 02481.

FR. BOB MCMILLAN: Some Parishioners have inquired about getting in contact with Fr. McMillan in order that they that they might wish him well. His address is:

Fr. Robert G. McMillan, SJ
Loyola House, 300 Newbury Street
Boston, MA 02115-2801

On behalf of all, we extend our gratitude to him for his many years of service to St. John's Parish.

WELCOME TO FR. JOHN CONNELLY!

This past week, Fr. John Connelly retired as Pastor of Sacred Heart Parish in Newton Center where he has been Pastor for 30 years. Prior to that, he was Professor of Systematic Theology at St. John's Seminary in Brighton. It was there that he assumed responsibility for the education and formation of the two priests who presently serve St. Johns. We will let you decide whether he was successful in that effort!

We extend to Fr. Connelly our warmest greetings, and we are sure that he will benefit greatly from the hospitality of St. John Parish.

STAY IN TOUCH WHILE TRAVELING! Keep up with all the news posted to our website via RSS feed or email updates - just visit our website and look for the **FOLLOW US!** links.

WE OFFER OUR PRAYERS for members of our Parish who are ill, remembering especially: **Jim, JoAnne, Joe, Kerry, Pat and Peggy.**

Please contact the Rectory if you know someone who is homebound, sick or hospitalized.

CATHOLIC TV Verizon - 296, RCN - 85, Comcast - 268, Charter - 101

CAPITAL CAMPAIGN

Focus Groups begin this week!
The Cornerstone staff will be conducting these meetings in the Social Hall:

Thursday, June 13th
1:00 p.m. and 7:00 p.m.

and

Monday, June 17th
1:00 p.m. and 7:00 p.m.

Focus Groups meetings are open to all parishioners.

Please make every effort to participate in the survey process so that we may complete this study with your open and honest input. To take part in a Focus Group, please complete one of the forms available in the back of the Church. Once completed, return it to the Parish either by mail, in person or through the Sunday Collection.

THE SUMMER MASS SCHEDULE

St. John's Summer Mass schedule has begun. There will be ***no*** Sunday 5:00 p.m. Mass during the Summer months, but this Mass will resume again in the Fall.

HEARING EQUIPMENT AVAILABLE

St. John Parish now has hearing equipment which may be borrowed during Mass for those who have a need. Please see our pastoral staff for more information.

PARISH REGISTRATION: *Have you moved recently? Changed your email address?* Update your information below and drop it in the offertory basket, or return it to the Parish office.

New Parishioners: If you have been attending St John's and have not registered, we invite you to become a member. Please either stop by the Parish Office, give us a call (781-235-0045) or email st-johns@comcast.net. Being registered ensures that you are known to the parish, allowing you to share more fully in parish life and enabling us to provide better pastoral care.

Not sure if you are registered? Call or email the Parish Office and we will check for you!

NEW PARISH REGISTRATION/UPDATE

If you are just beginning to worship with us at St. John Church, WELCOME! We invite you to register as members of our Parish. You may drop your completed information in the basket, or return it to our Parish office. Please introduce yourselves when you have a chance!

NAME _____

ADDRESS _____

TELEPHONE _____

E-MAIL _____

☐ ***THIS IS A NEW REGISTRATION*** (You will be sent a complete registration card)

☐ ***THIS IS AN UPDATE FOR:***

☐ ***Change of Name***

☐ ***Moving out of Parish***

☐ ***Change of Address***

☐ ***Someone in Hospital***

☐ ***Send envelopes***

☐ ***Someone Homebound***

CENTRAL REPUBLIC OF AFRICA

On previous occasions, we have shared with you the reflections of Bishop Nestor Nongo, who assisted at St. John's a few Summers ago. In his most recent e-mail, he indicated the Central Republic of Africa "*has become a ghost country where ethical values were replaced by the gain of power, injustice, the law of the jungle, the settling of scores and the witch hunt. Henceforth Central African citizens have been considered like beasts to be tracked down and killed with impunity.*"

He also shared a letter the Bishops have sent to the new President and we share with you a portion of this letter that highlights the suffering that the Church in the Central Republic is experiencing.

Your Excellency the President,

What are the real intentions of this movement against our Christian institutions? Are you the author of the Letter addressed to the Islamic Conference Organisation from Saudi Arabia on April 17th, 2012 (see attachment)? How could you account for the fierceness with which the elements of SELEKA have attacked (destroyed) our institutions? The results are staggering:

- 1. Systematic theft of our means of transportation (more than a hundred vehicles and machines have been stolen);*
- 2. Desecration of religious buildings and objects. One can cite the example of the parish of Saint Joseph in Mobaye, Our Lady of the Immaculate Conception in Batangafo, and the oratory of the sisters in Markounda;*
- 3. Looting and ransacking of Catholic Radios in Bossangoa and Bambari;*
- 4. Disruption of liturgical celebrations;*
- 5. Fire shots at the Cathedral of Our Lady of the Immaculate Conception in Bangui at the end of the celebration of Palm Sunday;*
- 6. Physical assault of priests and religious. An example is the case of the Religious Sisters from Mbrès, priests from the dioceses of Alindao, Bangui, Bossangoa and even the Bishop of Bambari;*
- 7. Hindrance to free movement of pastoral agents (3 bishops, priests and nuns) blocked in Bangui since Holy Week.*

We already bring to your awareness that the Episcopal Commission for Justice and Peace will timely submit to your office a complete record to this effect.

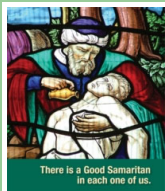
Given in Bangui on April 23th, 2013

Most Rev. Dr Nestor Désiré NONGO AZIAGBIA SMA, Bishop of Bossangoa

TRAVELING?: Don't forget to include time for Mass in your travel plans. Whether you are traveling within the United States or abroad, you can find the Mass schedules of churches throughout the world at www.masstimes.org.

There's an App for that!

There is a free iPhone app that not only tells you the Mass times, but can detect your current location, show you nearby churches, give you Mass times, address, phone number, and website of a nearby parish, connect you to a map and give directions, give readings for the day and the saint of the day, and unbelievably, play for you the Catholic TV Mass for the day or any of the days of the last few weeks! It is called the Catholic Directory, and can be found in the App Store on your iPod or iPhone. Why not give it a try?



2013 CATHOLIC APPEAL: To date, our parish contributions total \$29,295(39% of our goal). We are each called to care for our neighbors. We have the opportunity to be the Good Samaritan to others through our support of the Catholic Appeal. Please consider a donation.

PARISH REVENUE

Parish Annual Appeal

Actual (6/2/13) \$438,513

Prior Year (6/2/12) \$429,299

Full Year Budget (FY13) \$443,700

Weekly Offertory

FY2013 6/2/13 \$408,802

FY2012 6/2/12 \$398,482

FY2013

Budget 6/2/13 \$399,800

Thank you for your continued generous support. **If you have not given to the Parish Annual Appeal, please consider a gift to help support the operating needs of the Parish.** We are at 98.8% of our Goal. Please help us achieve our budget by giving to our second collection this weekend. If you missed any collections due to the weather or vacations, feel free to drop them in this weekend's collection, in the mail or at the Rectory. Packets are available in the rear of the Church or in the vestibule of the Rectory.



NEW PARENTS AND PARENTS OF LITTLE ONES : Looking to meet other parents from St. John's or make a friend for your little one? We are looking to start a new group for parents this fall. A group organized by parents where they can stop by for a play group in the social hall, at the park, where ever! We are open to any ideas and suggestions! Whether you're going to have a new baby, have a newborn or preschool age kids already -we'd love to hear from you. Email Chrissy Cassa at chrissy.cassa@stjohnwellesley.org

SECOND COLLECTION: This weekend's second collection is the special monthly for St. John.

SACRAMENTAL & DEVOTIONAL SERVICES

Adoration: Suspended during the Summer months, will resume in the Fall

Anointing of the Sick: First Saturday, following the 5:00 p.m. Mass

Baptism: Schedule with Priest • **Funeral:** Contact Parish Priest • **Marriage:** Arrange six months prior

Penance: Saturday 3:30-4 p.m., Chapel (or by appointment)

Rite of Christian Initiation of Adults (RCIA): Contact Parish

WEEKEND MASS PARTICIPANTS

	Saturday June 8	Sunday, June 9		
	5:00 p.m.	7:30 a.m.	9:00 a.m.	11:00 a.m.
Celebrant	Fr. Hehir	Fr. Connelly	Fr. Powers	Fr. Hehir
Deacon	—	—	—	—
Lector	Paula Ebben	John Stewart	—	Troy Murray
Eucharistic Ministers	Carolyn Anderson Bob Feige Patrick Blomberg Christine Tierney Joe Tierney	Bill Larrenaga Bob Peretti Janice Peretti	Mary Barber Helen Boucher Kathy Smith Susan Calcio John Calcio	Jon Bonsall Kathy Bonsall Stephen Orr Jim Post Jeannette Post
Altar Servers	—	—	—	—

ST. FRANCIS HOUSE MEN'S CLOTHING DRIVE • June 15-16

St. Francis House is the largest day shelter in New England, serving over 800 men and women on a daily basis. Its services include meals, clothing, counseling and healthcare to the homeless. St. John's conducts an annual Men's Clothing Drive in June to collect everyday clothing needs such as jeans, socks and hats. This year's clothing drive will be held the weekend of June 15-16. If you have questions about in this annual collection, please contact Shilan Yeung at 781-707-8290.



Spring Men's items

Jeans - sizes: 32 x 32, 34 x 32, 36 x 32, 38 x 32, & 40 x 32.

Belts - all sizes

Casual Short Sleeve Shirts: M, L, XL, 2X, 3 X, & 4X.

Sweatpants sizes: M-2X.

Shoes and sneakers sizes 7-15

Socks - New*

Spring/Fall Jackets: M, L, XL, 2X and 3X.

Baseball hats

Hooded sweatshirts sizes: S, M, L, XL, 2X, 3X, & 4X.

Other Items:

Shopping plastic bags (can be used ones), **Backpacks** and **Ponchos**



* St. Francis House provides a Foot Clinic for the homeless where they may have their feet checked, have a foot soak and are given powder and medicated ointment for their feet as well as a new pair of socks. The clinic relies on donations of new socks for the individuals serviced there.

INTER PARISH COLLABORATIVE TEAM

In preparation for the integration of St. John and St. Paul into a new parish collaborative, the inter parish team will be presenting information, on a regular basis, that will help keep you well informed. With that objective in mind we are publishing the following article that was written by Rev. Paul Soper on Feb. 10, 2013. This is a brief, accurate and concise explanation of the Archdiocese Pastoral Plan for the formation of parish collaboratives.

Disciples in Mission: Pastoral Planning by Rev. Paul Soper, Director - February 10, 2013

I don't think anyone would disagree that the Archdiocese of Boston and the Universal Church have had a pretty tough decade. Reeling from the effects of the abuse crisis, declining Mass attendance, a bleak financial picture, and an ever-dwindling number of clergy to carry forth the mission of the Church, we easily could have decided to shrink and turn inwards. Instead of choosing the easier, yet more painful route of closing churches, we have decided to form an innovative, and dynamic plan to treat the cause and not the symptom of such disheartening changes, seeking a way to reverse global trends and get people back in the pews, increase donations, and see vocations on the rise, so that not only would we want to keep churches open, but we would need to keep them open to serve our burgeoning population? That is exactly what this plan strives to do.

In order to do this, we needed to address some structural components first. As our priest population is aging, we find it more and more challenging to serve all the parishes in the Archdiocese. It is difficult for pastors to serve their parishes because they are expected to wear many hats—as both spiritual shepherd and business manager. To address these issues, we have created collaboratives of parishes where we can not only pool resources, but also where a priest or priests can serve the spiritual needs of a parish, while a strong, well-trained support staff can handle the day-to-day tasks of running an organization. This way, priests can better focus on what they were ordained to do: serve the people of God.

This is not intended to be a top-down restructuring of every minute detail in a parish—certainly the people on the ground know best the dynamics of their own parish. That is why each collaborative will write their own local pastoral plan to hash out the details of how Pastoral Planning will take shape in their collaborative. While there will, of course, be many practical issues to work out, it is important to remember that the focus and goal will be bringing people back to Christ.

In the coming weeks, we will discuss exactly how we plan to do that—how we came to choose the collaboratives in Phase One, what will the trainings (undertaken by both parishes and the central staff of the Archdiocese) involve, what is the “New Evangelization” and how does it work. All of that and more to come. Until then, you can always get more details about Pastoral Planning on the website, DisciplesinMission.com.


CALENDAR FOR THE WEEK

Tuesday	June 11	Marian Movement	7:00 p.m.	Chapel
Thursday	June 13	Focus Groups, Capital Campaign	1:00 and 7:00 p.m.	Social Hall

†**ST. KATHARINE DREXEL FOOD PANTRY:** *This weekend* (and every second Sunday), **June 9.** Please bring your donations of non-perishable food items to our Glen Road entrance. Contact Angela Spinale at (781-431-0008) with questions.



MASS INTENTIONS FOR THE WEEK

	Saturday, June 8	7:00 a.m.	Memorial	†	Joseph Fagan
		5:00 p.m.	Memorial	†	Catherine Prestejohn
	Sunday, June 9	7:30 a.m.	Memorial	†	Kory Lewis Hunter
		9:00 a.m.	Memorial	†	Josephine Bastamante
		11:00 a.m.	Memorial	†	Charles K. Rourke
			Memorial	†	Ken Pollenz
			Memorial	†	Joe Lane
			Memorial	†	Sheila N. Young
	Monday, June 10	7:00 a.m.	Memorial	†	George Bresnahan
	Tuesday, June 11	7:00 a.m.	Memorial	†	Patrick Collins
	Wednesday, June 12	7:00 a.m.	Memorial	†	D. Delvena Kloss & Mary Ellen Smith
	Thursday, June 13	7:00 a.m.	Memorial	†	Carlos Cruz
	Friday, June 14	7:00 a.m.	Memorial	†	Special Intention
	Saturday, June 15	7:00 a.m.	Memorial	†	Special Intention
		5:00 p.m.	Memorial	†	Giles Mosher
	Sunday, June 16	7:30 a.m.	Anniversary	†	Julia McDermott
		9:00 a.m.	Memorial	†	Alfred McLoughlin
		11:00 a.m.	Memorial	†	Agnes Marx
			Memorial	†	Sam S. Mullin
			Memorial	†	Alice & Irwin Bofferding
			Memorial	†	Adeline & Elmer Swanson
			Memorial	†	James T. McKinlay, Jr.

PARISH DIRECTORY

Pastor	Rev. Thomas F. Powers	781-235-0045
In Residence	Rev. J. Bryan Hehir	781-235-0045
In Residence	Rev. John Connelly	781-235-0045
Pastoral Associate	Sr. Evelyn Ronan, SND	781-235-0045
Deacon	Deacon Thomas A. Smith	781-235-6442
Deacon	Deacon Thomas Shuler	781-235-0045
Business Manager	Gail DeLuca	781-235-0045
Building Superintendent	David Linardy	781-235-0045
Parish Secretary	Sarah Connolly	781-235-0045
St. John School Principal	Kathleen T. Aldridge	781-235-0300
Religious Ed. Teacher Development	Christine Tierney	781-237-0141
Religious Education, Grades 1-6	Linda Messori	781-235-5337
Religious Education, Grades 7-10	Jane Leonard	781-237-0141
Family Mass Coordinator	Christine Cassa	781-235-0045
Music Director and Organist	Laurence Carson	781-235-0034
Parish Cantor	Marian Morrison	781-239-0174
Family Mass Music Director	Christopher Holownia	617-513-0823
Information Technology	Tricia Bombara	781-235-0045
Coordinator of R.C.I.A.	Svea Fraser	781-237-7560
Pastoral Planning Group	ppg@stjohnwellesley.org	

Parish Finance Council:

Sandy Avellone
 Brian Boyce
 Joe Creonte
 George Eldridge
 Tom Fontaine
 Rich Green
 Lucy Kapples
 Bob McDonnell
 David Spinale
 Anne Stabnick
 Steve St. Thomas (Chair)

Parish Pastoral Council:

Kate Donovan
 Art Greenwood
 Steve Healey
 Jack Kapples
 Mark Kelley
 Marci Loeber
 Stephanie Morgan
 Mary Mullen
 Ed Nelson
 Suzanne Pasko
 Christian Rubio
 Sheelah Sullivan