



Saint John the Evangelist Parish

Serving Wellesley - Newton

9 Glen Road
Wellesley Hills, MA 02481

www.stjohnwellesley.org

781-235-0045

(email) st-johns@comcast.net

(fax) 781-235-6990

Image painted by Anne Bell Robb/Kedron Design

Twenty-Third Sunday in Ordinary Time

September 8, 2013



Thank you Deacon Tom Smith

Since the time of the Apostles, God has inspired the Church to commission members to assist in a special way in the pastoral mission of Christ.

We thank Deacon Tom for taking on that mission and for his humble and faith-inspired service to St. John the Evangelist Parish.

All are cordially invited to a reception following the 11:00 a.m. Mass this Sunday, September 8 honoring Deacon Tom and his wife, Mary for Tom's many years of service to our Parish.

REGULAR MASS SCHEDULE

Saturday:

7:00 a.m.; 5:00 p.m. (Vigil)

Sunday:

7:30 a.m., 9:00 a.m., 11:00 a.m. and 5:00 p.m.

Weekday:

7:00 a.m. (Monday-Saturday)

Holy Day: (As announced)

CONFESSIONS

Saturday: 3:30-4 p.m., Chapel (or by appointment)

The Mission Statement of St. John Parish

*Baptized into Christ,
we are a community of believers,
bonded by our desire to learn and to live
the Gospel message.*

*As a Eucharistic people,
we share a commitment to foster
our personal and communal growth in faith
and to witness to Christ's presence
by our service to those in need,
both within and beyond our parish community.*

RELIGIOUS EDUCATION PROGRAM

Registration

Religious Education registration packets for the 2013/2014 school year were mailed to all families. If you have not received a packet in the mail, it is available for download on the Parish website found at www.stjohnwellesley.org. The late registration fee now applies; please include \$25/child in addition to the stated fee.

Our Parish's Confirmation preparation is a two year program beginning in grade 9. Except for those enrolled in Catholic schools, all students must complete the two year program prior to being Confirmed. All 10th grade Catholic school students planning to be Confirmed in May 2014 must fully participate in the second year of the Parish Religious Education Program. If you have any questions, please contact Jane Leonard at jane.leonard@stjohnwellesley.org or at 781.237.0141.

Teachers

We are always looking for volunteers who are willing to teach. We are especially in need of Wednesday afternoon teachers for grades 3, 4 and 5, and Sunday evening teachers for grades 8 and 9. If you are interested, please contact the religious education office at 781.235.5337 or 781.237.0141.

2013/2014 Class Schedule

Classes for all grades will begin as follows:

Grades 1 – 6: Sunday, 9/22, from 10 – 10:45 AM or
Wednesday, 9/25, from 3:30 – 4:45 PM

Grades 7 – 10: Sunday, 9/22, from 6 – 8 PM

A final calendar and *Opening Day Procedures* were recently mailed to all families. These documents can also be downloaded from the Parish website.

ST. JOHN SCHOOL PRINCIPAL: After five years as Principal and many years as a teacher, Ms. Kathi Aldridge has moved on from St. John School.

With more than 20 years at St. John School, Kathi built several reputations during her long tenure. As a faculty member, she was utterly devoted to her students, providing a life foundation for class-after-class of students and introducing all of them to the magic and joy of learning. Her contributions helped to build the brand and reputation of St. John's as a school devoted to exploration, learning, and Catholic-based values. As Principal, Kathi guided our efforts over the past five years to improve our technology education, and most recently, led our efforts to introduce a foreign language offering into our curriculum. We offer our prayers and good wishes to her.

The new Principal is Mr. Robert Arsenault and he comes to us after many years as Principal of elementary schools in Wilmington and Winchester. We are privileged to have a person with such extensive experience, coupled with an abundance of personal gifts as the leader of St. John School. We extend to him our warmest welcome, and we are sure that he will experience the genuine hospitality that is characteristic of St. John School.

SECOND COLLECTION: The second collection this weekend is the special monthly for St. John.

MARIAN MOVEMENT: Pray the Rosary every Tuesday at 7:00 p.m. in the Chapel.

PARISH REGISTRATION: *Have you moved recently? Changed your email address?* Update your information by calling the Rectory Office at (781) 235-0045 or e-mailing your updated information to st-johns@comcast.net.

WEEKEND MASS PARTICIPANTS

	Saturday, September 7	Sunday, September 8			
	5:00 p.m.	7:30 a.m.	9:00 a.m.	11:00 a.m.	5:00 p.m.
Celebrant	Fr. Connelly	Fr. Hehir	Fr. Powers	Fr. Powers	Fr. Hehir
Lector	Sally Miller	Fergus McCann		John Piccione	Alla O'Brien
Eucharistic Ministers	Carolyn Anderson Mae Capobianco Paul Cronin	Deirdre Heilbron Karl Benedict Pat Benedict	Helen Boucher Tim Murphy Maryann Murphy	Ann Swanson Margaret Klingmeyer Jon Bonsall Kathy Bonsall	Audrey Moran Tim Curtin Liz Curtin

CAPITAL CAMPAIGN

Below is the Planning Study Summary that we recently received from Cornerstone Fundraising. Please review the report and contact the Rectory Office if you have any questions.



St. John the Evangelist

Wellesley, MA

Planning Study Summary

Personal Interviews conducted: 23

Focus Groups: 4 focus groups- 47 participants

On-line survey: 125 participants

Case Statement: Sections of the original part of the church, most notably the tower, are in need of significant repair and reconstruction. The heating and cooling systems need updating and the parking lot needs repaving and improved lighting. Estimated cost: \$1,100,000

Study Highlights

- **St John- St Paul Collaborative.**

There is some misunderstanding regarding the parish collaborative. While some understand that the collaborative is primarily about “staffing” others fear there is a possibility of merging with a neighboring parish. It would be helpful for the parish to once again address the issue- through a bulletin article, homily, or by the Planning Committee.

- **Prioritize Fundraising Projects.**

Several parishioners suggested that the maintenance projects should be prioritized according fundraising goals achieved.

- **Fr. Powers, St. John’s Parish gets highly favorable ratings.**

Participants gave highly favorable ratings to the parish for its welcoming and vibrant community. They are especially grateful for the spiritual leadership of Fr. Powers, Sr. Evelyn and Fr. Hehir. They believe Fr. Powers has the ability to lead the parish through a successful fundraising effort.

- **Nearly all participants said they would give to capital campaign.**

Nearly all (91%) of those interviewed and participating in focus groups, with few exceptions, said they would contribute to a capital campaign. They clearly understand the need to address the maintenance issues. They also stressed the need for wide participation in the campaign, regardless of economic status; the need for equal sacrifice, not equal gifts.

- **The parish budget and maintenance.**

Several active parishioners noted the need to address on-going maintenance issues by allocating more funds in the annual budget. While there are some parish reserves, they would like to see additional funds being dedicated to future maintenance.

Sample of Survey Questions

Question 2: *Do you consider yourself an active parishioner?*

- Yes: 71% No: 9% Somewhat: 20%

Question 3: *How would you rate St. John the Evangelist Parish, taking into consideration the parish staff, the worship, the religious education program and the parish organizations and ministries?*

- Very good: 87% Good: 12% Fair: 1% Poor: N/A

Question 4: *What is your reaction to the Case Statement?*

- Favorable: 71% Unfavorable: 2% Mixed: 27%

Question 5: *In addition to the list of projects noted, are there other areas of need not addressed that you see as a priority?*

- Common response: Church sound system; Safety issue regarding Ledyard Street entrance

Question 7: With regard to your own involvement would you... give to a Campaign

- Yes: 91% No <1% Maybe 9%

RECOMMENDATIONS

The results of the Planning Study indicate that St. John the Evangelist Parish is in an excellent position to conduct a Capital Campaign to address the needs identified by the Parish Building Committee.

Taking into account the annual income of the parish, the strong support for the case, general concerns raised regarding the economy, the initial number of parishioners willing to commit to a campaign (91%), and the early indication of pledges, we believe St. John the Evangelist Parish should set the campaign goal at \$1,250,000.

Respectfully submitted by:

Cornerstone Fundraising. LLC
223 Low Street
Newburyport, MA
www.CornerstoneFundraising.com

WE OFFER OUR PRAYERS for members of our Parish who are ill, remembering especially:
Bob, Eileen, Jim, JoAnne, Kathy, Kerry, Pat, Peggy and Steven.

The results through September 1 are listed below. As you can see, our numbers are trailing last year at this time. Please consider using Parish Pay. Information is available on our website, or by calling the Parish Business Office at (781) 235-0045.

Parish Revenue

Weekly Offertory

Actual (9/01/13)	\$65,990
Prior Year (9/01/12)	\$67,256
Budget (9/01/13)	\$66,780

Annual Appeal

Actual thru 9/01/13	\$16,319
2013-14 Budget	\$444,399
Percent Complete	3.7%



DONUTS AND COFFEE: Family Mass Coffee & Donuts is starting up next weekend after the 9:00 a.m. Family Mass! New to the Parish? This is a great time to connect with other St. John families! Stop downstairs in the Social Hall after the Mass and grab a donut and coffee and catch up with friends - both new and old. This social hour cannot happen without your help! Please go to the web and sign-up for a Sunday that is convenient for you! stjohnwellesley.org/donuts



Collaborative News

The St. John and St. Paul parishes will, in the near future, be joined in a collaborative under a plan developed by the Archdiocesan Pastoral Commission. The St. John, St. Paul collaborative committee will, from time to time, publish in both bulletins, and on both parish websites, information regarding this collaboration. In the coming weeks, we will be presenting a series of 14 “Frequently Asked Questions.”

7. How can one Pastor handle the job of being Pastor for both St. John’s and St. Paul’s?! What type of training will he receive to enable him to tackle such a big job?

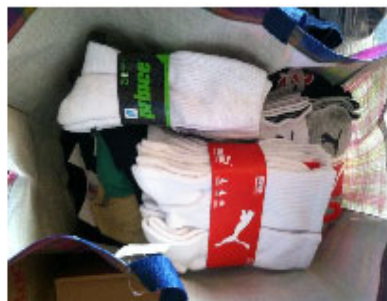
Although there will be just one Pastor for each Collaborative, he will not be the only person carrying out the work of the Church. He will leverage his time by utilizing a team of appointed Clergy (Parochial Vicars and Deacons), a Pastoral Team, Pastoral Council members, Finance Council members, and School Board members. Many of these individuals will undergo formal training with the Central Ministries of the Archdiocese. Training will focus on New Evangelization, Catholic Leadership, and the mechanics of Collaboration. In addition, the pastor and pastoral service team will be developing a pastoral plan that will include opportunities for laity in both parishes to support various parish ministries and activities.

We welcome your comments and feedback. Please email your questions or comments about Parish Collaboratives to - stjohn.stpaul@gmail.com

The St. Francis House
Men's Clothing Drive on the weekend of June 15 – 16 was a huge success.
Thank you for your generosity!

THANK YOU

As a parish community, we collected a truck load **men's gently-used everyday clothing** such as jeans, shirts, sweatshirts, and hats, as well as **new socks** for their Foot Clinic, which provides foot care and new socks to homeless clients. We send a *special Thank You* to those purchased new socks. The driver who did the pick up from St. Francis House said, he's been doing this for 17 years, and when he started he went to 120+ churches, but now he's down to 25 or so, with the volume of donations at many trending down. However, he said St. John's has shown the reverse trend, with increasing donations of the highest quality clothing, which their clients so appreciate, especially as they try to return to the work force. Our volume increase about 30%-40% from last year's collection. We achieved this as a community!



Faith Sharing Opportunity

The Religious Education program is looking for volunteers to teach or co-teach our students this year. We are especially in need of volunteers to teach grades 3, 4 and 5 on Wednesday afternoons, and grades 8 and 9 on Sunday evenings. (Each meets once or twice monthly.) No teaching experience, theology background or child development background is necessary, just a willingness to share your time and faith. Catechist guides, lessons, syllabi and resources are provided by the Religious Education Team and we are always available should you need any assistance. If you would like to help, please contact either Linda Messoré (linda.messore@stjohnwellesley.org) or Jane Leonard (jane.leonard@stjohnwellesley.org). Many thanks for your interest in the success of this important Parish program.

VOLUNTEERS NEEDED: Occasionally the Rectory receives a call from an elderly parishioner who can no longer drive, but who would love to attend Mass. If you are available to volunteer and give a parishioner a ride to Mass on occasion, please contact the Rectory Office at (781) 235-0045.

†ST. KATHARINE DREXEL FOOD PANTRY:



This weekend (and every second Sunday), **September 8.** Please bring your donations of non-perishable food items to our Glen Road entrance. For more information please contact Angela Spinale at (781) 431-0008.

Please note: Due to the Columbus Day holiday, the October collection for the St. Katharine Food Pantry regularly scheduled for the second Sunday of the month (October 13), will be moved to Sunday, October 20.

Mark your calendars! Welcome Weekend September 21-22, 2013

PARISH COUNCIL NOMINATIONS: During September, there is an opportunity to add new members to the Parish Pastoral Council. We ask that you carefully consider whom you believe would enjoy serving in this way. Having considered the qualifications and responsibilities and described below, we encourage you to nominate your self or another parishioner. Once we have collected and confirmed the nominations, we will draw four adult members for a three-year term from names submitted.

Qualifications: (1) Be a Catholic who is registered and active in the Parish, (2) Participate in the sacramental life of the Church, (3) Be 18 years of age or older.

Responsibilities: The normal term of a Parish Council member is three years. Meetings are usually held on the third Tuesday of each month at 7:30 p.m.

As a consultative body, the Parish Pastoral Council is responsible to the pastor, assisting and supporting him in his leadership role. It recognizes the varied gifts of the parish members and invites them to an active leadership role in the parish.

PARISH PASTORAL COUNCIL NOMINATIONS

Please submit this portion with your nomination(s) to the ballot box at the Church entrance or to the Rectory office as soon as possible. Thank you very much for your consideration. Nominations will close on Tuesday, October 1, 2013.

Please consider for nomination to our Parish Pastoral Council the following:

Name

Address (optional)

Name

Address (optional)

Name

Address (optional)

SACRAMENTAL & DEVOTIONAL SERVICES

Adoration: Suspended during the Summer months, will resume in the Fall
Anointing of the Sick: First Saturday, following the 5:00 p.m. Mass • **Baptism:** Schedule with Priest
Funeral: Contact Parish Priest • **Marriage:** Arrange six months prior
Penance: Saturday 3:30-4 p.m., Chapel (or by appointment)
Rite of Christian Initiation of Adults (RCIA): Contact Parish

MASS INTENTIONS FOR THE WEEK



Saturday, September 7	7:00 a.m.	Memorial	†	David C. Chapman
	5:00 p.m.	Memorial	†	Allan Fisher
Sunday, September 8	7:30 a.m.	Memorial	†	James Bennett
	9:00 a.m.	Memorial	†	Julie McShane
	11:00 a.m.	Special Intention	†	Deacon Thomas & Mary Smith
		Memorial	†	Mary E. Reed
		Memorial	†	Sheila N. Young
		Memorial	†	Robert L. Massard
	5:00 p.m.	Memorial	†	Josephine Kelly
Monday, September 9	7:00 a.m.	Memorial	†	George Bresnahan
Tuesday, September 10	7:00 a.m.	Memorial	†	Stephen Orr, Sr.
Wednesday, September 11	7:00 a.m.	Memorial	†	Fr. John Philbin
Thursday, September 12	7:00 a.m.	Memorial	†	For the Parish
Friday, September 13	7:00 a.m.	Memorial	†	Mary Monica Thomas
Saturday, September 14	7:00 a.m.	Memorial	†	Donald J. MacMillan
	5:00 p.m.	Memorial	†	Karri Kanczak
Sunday, September 15	7:30 a.m.	Memorial	†	Rosalie K. Orr
	9:00 a.m.	Memorial	†	Donald Pickersgill
	11:00 a.m.	Memorial	†	Agnes Marx
		Memorial	†	Alice & Irwin Bofferding
		Memorial	†	Adeline & Elmer Swanson
		Memorial	†	Sam S. Mullin
		10th Anniversary	†	Grace A. Scammon
	5:00 p.m.	Memorial	†	Don Gibbons

PARISH DIRECTORY

Pastor	Rev. Thomas F. Powers	781-235-0045
In Residence	Rev. J. Bryan Hehir	781-235-0045
In Residence	Rev. John Connelly	781-235-0045
Pastoral Associate	Sr. Evelyn Ronan, SND	781-235-0045
Deacon	Deacon Thomas A. Smith	781-235-6442
Business Manager	Gail DeLuca	781-235-0045
Building Superintendent	David Linardy	781-235-0045
Parish Secretary	Sarah Connolly	781-235-0045
St. John School Principal	Robert Arsenault	781-235-0300
Religious Ed. Teacher Development	Christine Tierney	781-237-0141
Religious Education, Grades 1-6	Linda Messoré	781-235-5337
Religious Education, Grades 7-10	Jane Leonard	781-237-0141
Family Mass Coordinator	Christine Cassa	781-235-0045
Music Director and Organist	Laurence Carson	781-235-0034
Parish Cantor	Marian Morrison	781-239-0174
Family Mass Music Director	Christopher Holownia	617-513-0823
Information Technology	Tricia Bombara	781-235-0045
Coordinator of R.C.I.A.	Svea Fraser	781-237-7560
Pastoral Planning Group	ppg@stjohnwellesley.org	

Parish Finance Council:

Sandy Avellone
 Brian Boyce
 Joe Creonte
 George Eldridge
 Tom Fontaine
 Rich Green
 Lucy Kapples
 Bob McDonnell
 David Spinale
 Anne Stabnick
 Steve St. Thomas (Chair)

Parish Pastoral Council:

Kate Donovan
 Art Greenwood
 Steve Healey
 Jack Kapples
 Mark Kelley
 Marci Loeber
 Stephanie Morgan
 Mary Mullen
 Ed Nelson
 Suzanne Pasko
 Christian Rubio
 Sheelah Sullivan